



ALLIED Connection



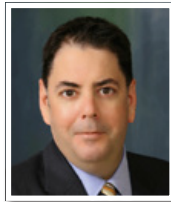
AT FIRST GLANCE, BEING RANKED 1157 on the INC 5000 List of Fastest Growing Companies may not seem impressive until you realize there are more than 29.5 million businesses in the United States!

For more than 30 years, Inc.'s list has served as evidence of the significant accomplishments of enterprises such as Allied Industries, Inc., and more than ever, this year's list is a testament to the resilience and tenacity of America's top entrepreneurs.

Congratulations to the Allied Team in being recognized for their creativity, dedication, and hard work that have gone into building the company into what it is today.

Presidents Letter

— BY ERNESTO GUTIERREZ - PRESIDENT/CEO



ALLIED INDUSTRIES, Inc., in the last few years has established itself as a one of the leading and emerging environmental and construction firms in the western

states. Allied continues to maintain an aggressive short-term and long-term growth strategy. As Allied nears its 12TH year anniversary, it enters its busiest 4TH quarter with a commitment to enhance its network and information technology platform. Allied has experienced tremendous growth through the adoption of various technologies allowing its various divisions and departments to efficiently and effectively schedule work while leveraging operational capacities. Resource identification and allocation

has been managed through various technological platforms allowing Allied to deliver in line with critical path constraints, within budget, and meeting quality objectives. In spite of Allied's reliance on technology, its people are its greatest resource. As we move into the last stretch of the year, Allied is relying on its long-time and newly hired personnel to collaborate with each other as Allied is in the process of moving its corporate headquarters to a state of the art facility and bolstering its existing network and applications. As our nearly 300 team members have come to depend on each other to maintain Allied's culture and commitment to exceeding client expectations, Allied will invariably continue to succeed as long as its greatest resource, its people, continue to strive to achieve its Vision.

INSIDE THIS ISSUE:



TOP 500 HISPANIC BUSINESSES
Allied Industries, Inc., came in at 186



EMPLOYEE OF THE MONTH & NEW FACES
John Adams
Erik Furuholmen



PROJECT HIGHLIGHTS
Naval Base Ventura
Salinas Field
ANG Armory



WHY IS ASBESTOS SO DANGEROUS?
Helping to prevent Asbestos exposure

Southern California Claims Association Golf Tournament

ALLIED INDUSTRIES, INC., would like to thank all who stopped by our hole at the 2010 SCCA golf tournament on July 16TH, Thank you to all who contributed their great ideas; we were awarded the “Best Hole Decoration” prize. We had a great time and with all of you and we look forward to seeing everyone again at next year’s event.



PROJECT HIGHLIGHTS

Top 500 Hispanic Businesses

ALLIED INDUSTRIES, INC., IS PROUD TO announce that for the third year in a row it made the Top 500 Hispanic Businesses in the USA. ALLIED came in at 186, which is nearly 100 spots up from last year! This year we expect to surpass our current spot on the Top 500 Hispanic Businesses. We thank everyone for their continuous support throughout the years.

Natural Gas Distribution System

ALLIED INDUSTRIES, INC., CONTRACTED WITH Winzler & Kelly to develop engineered plans for Naval Base Ventura County that detailed the path of travel for the new pipe, depth of installation, trench details, bedding and cover details, points of connection details and mechanical justification for the use of a “home run” to the utility company’s main point of connection. Allied conducted the field investigation, surveying, and verification of all existing site conditions. Allied successfully used in-depth

stakeholder meetings to coordinate with base police for traffic control issues, base fire department for emergency preparedness and managers from all the facilities that would be impacted by Allied’s work. A construction schedule was developed that provided the least inconvenience regarding parking, access and foot traffic for all affected facilities.

Allied’s commitment to safety is equally as important as the quality of our work.

Employee of the Month & New Faces

Congratulations to the following Allied employees. Thank you for your dedication and hard work.

- **April- Steve Alvarez**
- **May- Hector Rodriguez**
- **June- Ernesto Ferrusquia**

“You can do anything you wish to do, have anything you wish to have, be anything you wish to be.” ROBERT COLLIER



JOHN ADAMS

Serves as a project manager for our Pomona office which serves the Inland Empire and surrounding areas. John brings over 15 years of experience. John has been happily married for the past 14 years; he has 2 daughters. In his free time, he likes to play golf, ride mountain bikes, and he enjoys playing with his kids.



ERIK FURUHOLMEN

Serves as a project manager/ estimator for the San Diego office. Erik has over 10 years experience in commercial demolition industry, including public works. His experience includes heavy structural and selective demolition, steel demolition, concrete sawing, breaking and removal.



Helpful Links

America’s Claims Event:
<http://www.americasclaimsevent.com>

United States Environmental Protection Agency:
<http://www.epa.gov>

San Diego Insurance Adjusters Association:
<http://www.sdiaa.org>



Upcoming events

September 9-10TH- 17TH Annual Claims Conference of N. California | Sacramento, CA

October 21ST- 4TH – Annual California Association of Independent Insurance Adjusters | Rohnert Park, CA

November 1-3RD – PLRB Western Regional Conference | Anaheim, CA



Salinas Field Maintenance Shop

ALLIED INDUSTRIES, INC., NEGOTIATED A contract to rebuild and construct an addition to the Army National Guard Shop in Salinas, California. Activities included the removal of asbestos, and lead containing materials, sandblasting the exterior of the building and removing all interior finishes. Allied also removed the exiting roof to make way for a new “cool” roof system. Allied’s subcontractor ICHOR was hired to perform epoxy injection of several hundred feet of stress cracks to weather proof the structure before final interior and exterior coatings are to be installed. Allied is also constructing a 1,100 square foot addition to the building which will become a new part of the housing area and office space for the tenants of FMS #26

— BY CHRIS CERVANTES | ALLIED LEAD

Army National Guard Armory; Stockton, CA

ALLIED INDUSTRIES, INC., DESIGN/BUILD project consisting of a site survey, construction grading, and excavation for a brand new pre-engineered building for the California Army National Guard located in Stockton, CA.

The site survey also consisted of collecting soil samples and staking. ALLIED was in charge of clearing and grubbing of debris and low lying vegetation from the project site before the

project could move forward. Construction Excavation and grading were performed on site in order for the building footings, pad, and parking apron to be set in place at the proper elevations for the new 100’ x 40’ sq ft. steel pre-engineered structure to be erected. All concrete slabs were saw-cut to provide relief joints. The existing manhole was raised to meet the new finish elevation along with some minor trench work to create a path for power from the existing 200 amp panel located at the south end of the site. Throughout this project ALLIED received high marks for safety, performance, workmanship, and timely execution of the work performed.

The pre-engineered steel building included 10 sky-lights, 2 vehicle roll-up doors, 2 pedestrian doors, and 8 bollards. Electrical service was provided from the existing 200 amp panel. The new electrical systems include the following; new conduit routes, 21 lighting fixtures (interior and exterior), sub-panels, switches, receptacles, and emergency exit lighting throughout the facility.

The intent of the project was to provide a new permanent PEB storage building with approximately 400 sqft. for the California Army Air Support Facilities Group.

Overall the project was awarded a Design/Build and was delivered on schedule and within budget. The project ended with a contract value of \$703,000 including change orders (work added due to increased budget) was completed in August 2010.

— BY SCOTT GABLE | ALLIED LEAD

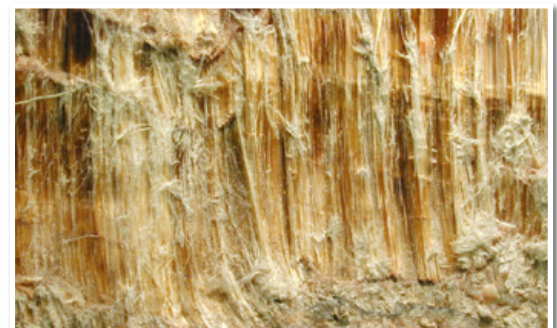
Why is Asbestos so Dangerous?

- Lung cancer
- Mesothelioma
- Gastrointestinal, colorectal, throat, kidney, esophageal, and gallbladder cancer

THE FACT THAT ASBESTOS IS COMPOSED OF readily separated fibers which is what contributes to the easy inhalation and ingestion of asbestos. The shape of these fibers reacts negatively with human tissue and biological processes, when inhaled or swallowed. These fibers can become lodged in the tissues of the linings of organs, most commonly the lungs and digestive system.

Over time, the lodged fibers cause inflammation and cellular damage, which can eventually lead to a variety of terminal diseases. Even though the dangers of asbestos have been recognized since antiquity, the caustic mineral was used to make a number of products, many of which were commonly found in the home. Today, the use of asbestos in the United States is more regulated, but most U.S. residents are under the impression that asbestos was banned in the late-1980s.

The Environmental Protection Agency tried to enforce a ban in 1989, but the ban was thrown out by the Fifth Circuit Court of Appeals in 1991. Asbestos is known to cause asbestosis, lung cancer, mesothelioma. Asbestos exposure also increases the risk of gastrointestinal, colorectal, throat, kidney, esophageal, and gallbladder cancer. Those who suspect they may have been exposed to asbestos should speak with a doctor to be medically assessed for **asbestos exposure**.



Allied looking ahead

ALLIED'S 4TH QUARTER HAS HISTORICALLY BEEN its busiest quarter yet, with all the various different requirements necessary to close the fiscal year. ALLIED will be conducting its annual Sales and Management meeting in Palm Springs whereby all business unit leaders and department heads congregate to discuss key strategic and tactical initiatives for the upcoming year. It is no surprise that Allied has been in growth mode these recent years and will continue to do so with the development of horizontal and vertical business units including acquisitions. In addition to increasing market share, ALLIED will be making significant investment in Corporate Health and Safety Program with great emphasis on incentives for all personnel. In the meantime, ALLIED looks forward to a very strong 4Q.

Offices

CORPORATE OFFICE

11333 Vanowen Street
North Hollywood, CA 91605
Cage Code 3RCC9
Ph: (818) 781-2490
Fax: (818) 781-2496

SAN DIEGO OFFICE

5725 Kearny Villa Road,
Suite A
San Diego, CA 92123
Cage Code 4MSU2
Ph: (619) 955-6811
Fax: (619) 955-7935

INLAND EMPIRE OFFICE

3214 Producer Way, Unit A
Pomona, CA 91766
Ph: (800) 605-5323
Fax: (909) 595-5981

SACRAMENTO OFFICE

1016 W. N. Market, Ste 100
Sacramento, CA 95834-1980
Ph: (916) 929-9002
Fax: (916) 929-9003

TEXAS OFFICE

945 McKinney Street, #462
Houston, TX 77002
Ph: (432) 339-9701

FLORIDA OFFICE

817 S. Howard Avenue
Tampa, FL 33606
Ph: (800) 605-5323

ARIZONA OFFICE

303 E. Gurley Street, #265
Prescott, AZ 86301
Ph: (800) 605-5323

LOUISIANA OFFICE

201 St. Charles Avenue,
Suite 114.330
New Orleans, LA 70170
Ph: (800) 605-5323

SEATTLE OFFICE

PO Box 84926
Seattle, WA 98124
Ph: (206) 719-9560
Fax: (206) 452-5622

UTAH OFFICE

32 West 200 South #248
Salt Lake City, UT 84101
Ph: (800) 605-5323

if you would like to subscribe to our mailing list or unsubscribe - please e-mail: marketing@alliedlead.com

ENVIRONMENTAL ENGINEERING, CONSTRUCTION & REMEDIATION SERVICES

This newsletter brought to you courtesy of:



4570 Van Nuys Boulevard, Suite 308
Sherman Oaks, CA 91403

CORE CAPABILITIES

- Design - Build Construction
- Environmental Remediation
- Environmental Engineering
- Demolition
- Industrial Abatement
- Operations & Maintenance

Find us on:

[facebook](#)

[twitter](#)

[Linked in](#)